



Office of Renewable Energy Programs

**NAC-CESU Annual Meeting
June 12, 2013**

**Mary C. Boatman, Ph.D.
Environmental Studies Chief**





- Bureau within the Department of the Interior
- Sister bureau to the Bureau of Safety and Environmental Enforcement (BSEE)
- Oversees development of the nation's oil and gas, renewable energy, and other mineral and energy resources on the Outer Continental Shelf





Environmental Studies Program

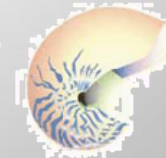
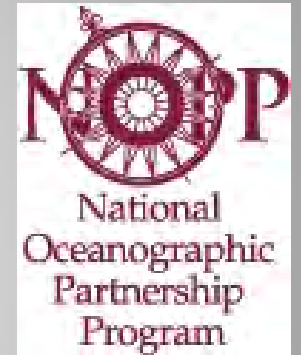
- Initiated in 1973 to support offshore oil and gas leasing program
- Statutory authorization derived primarily from the OCSLA and EPO Act of 2005 which gave BOEM authority to regulate OCS Renewable energy projects
- Outer Continental Shelf (OCS) is the submerged lands beyond the State navigable waters; the OCS ranges from 3 to 200 miles seaward of the coastline
- Section 20 of the OCSLA authorizes the ESP and establishes three general goals for the program



- Establish the information needed for assessment and management of environmental impacts on the human, marine, and coastal environments of the Outer Continental Shelf (OCS) and the potentially affected coastal areas
- Predict impacts on the marine biota which may result from chronic, low-level pollution or large spills associated with OCS production, from drilling fluids and cuttings discharges, pipeline emplacement, or onshore facilities
- Monitor human, marine, and coastal environments to provide time series and data trend information for identification of significant changes in the quality and productivity of these environments, and to identify the causes of these changes



Partnering



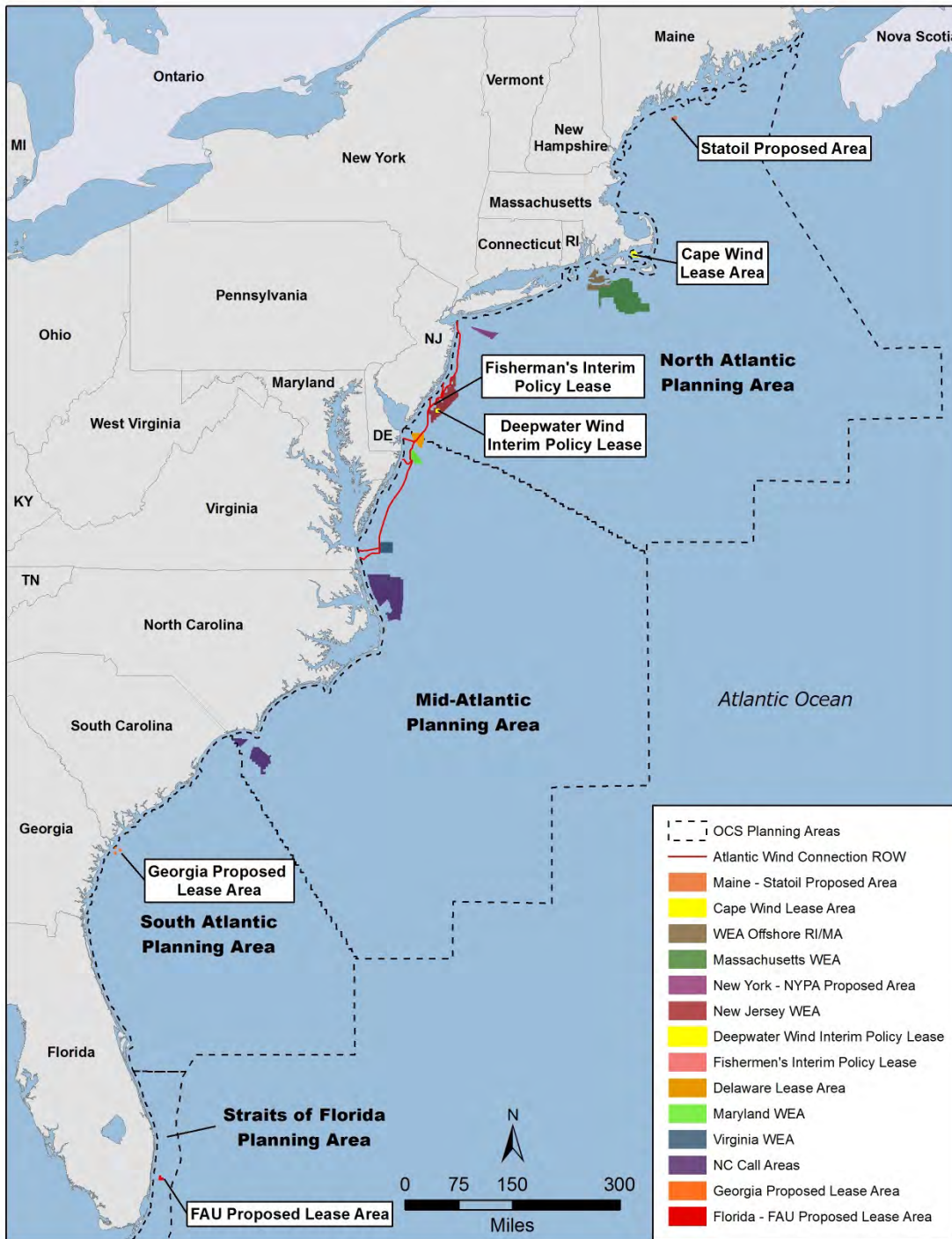
Coastal
Marine
Institute

University of Alaska & Alaska Management Service



Wind Energy

Marine Hydrokinetic
(Ocean Current)



Wind Energy Areas:

Massachusetts
 Rhode Island*
 New Jersey
 Delaware*
 Maryland
 Virginia
 North Carolina*

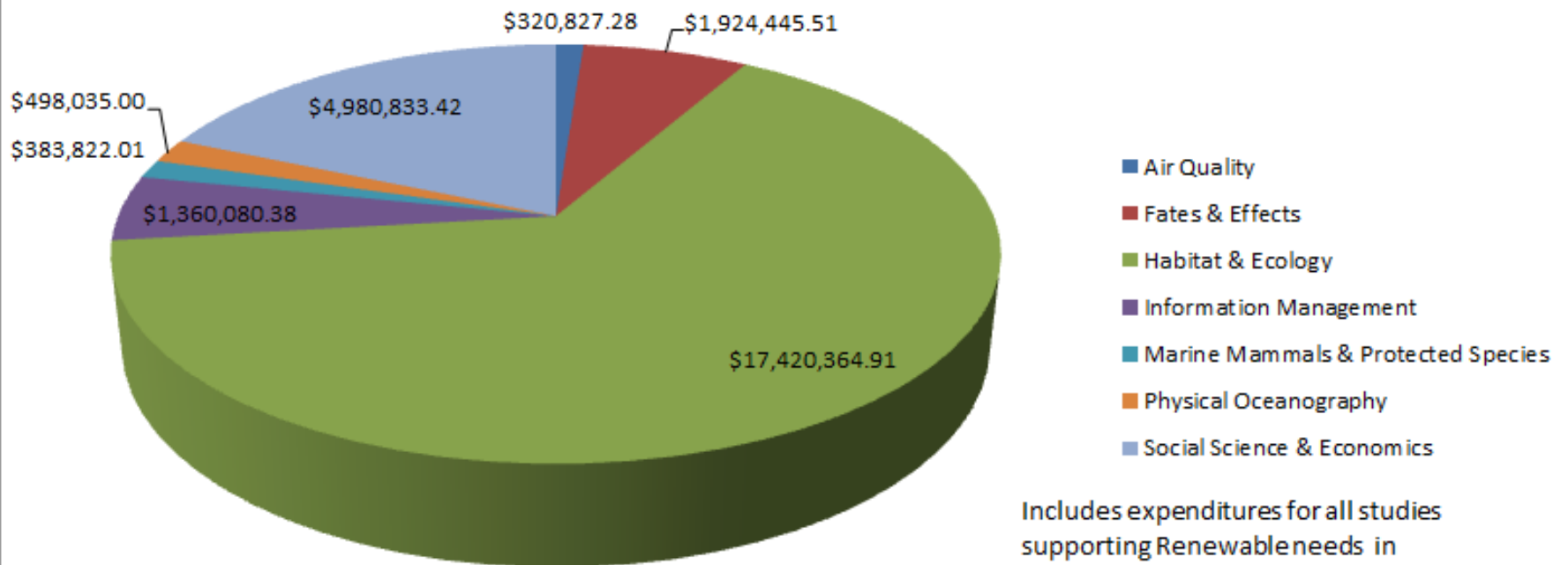
Interim Policy Leases:

New Jersey
 Georgia*
 Florida*

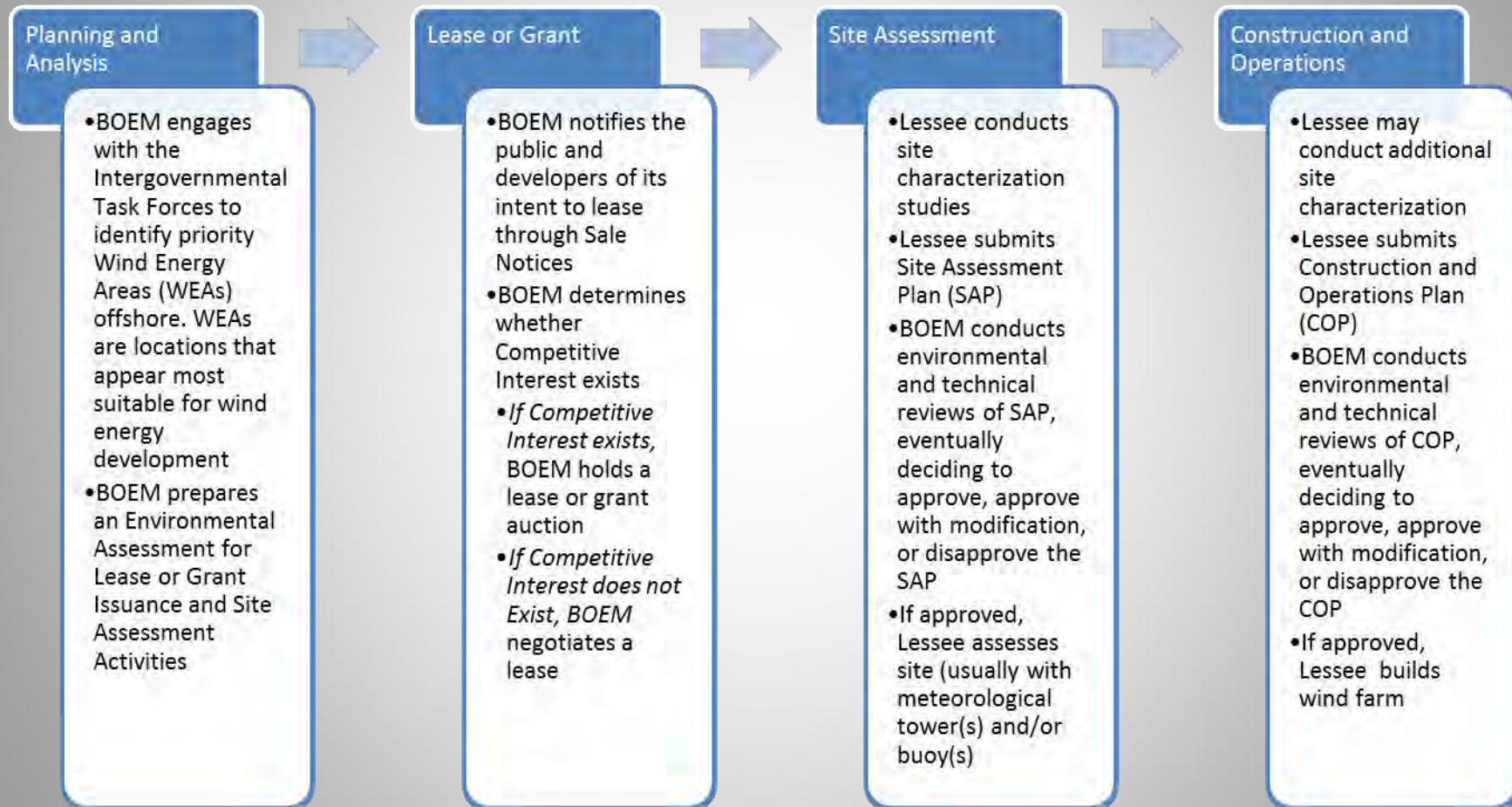
Specific Projects:

Cape Wind
 Statoil*
 Atlantic Wind Connection*

Renewable Funds by Discipline FY 2008-2013 Cumulative

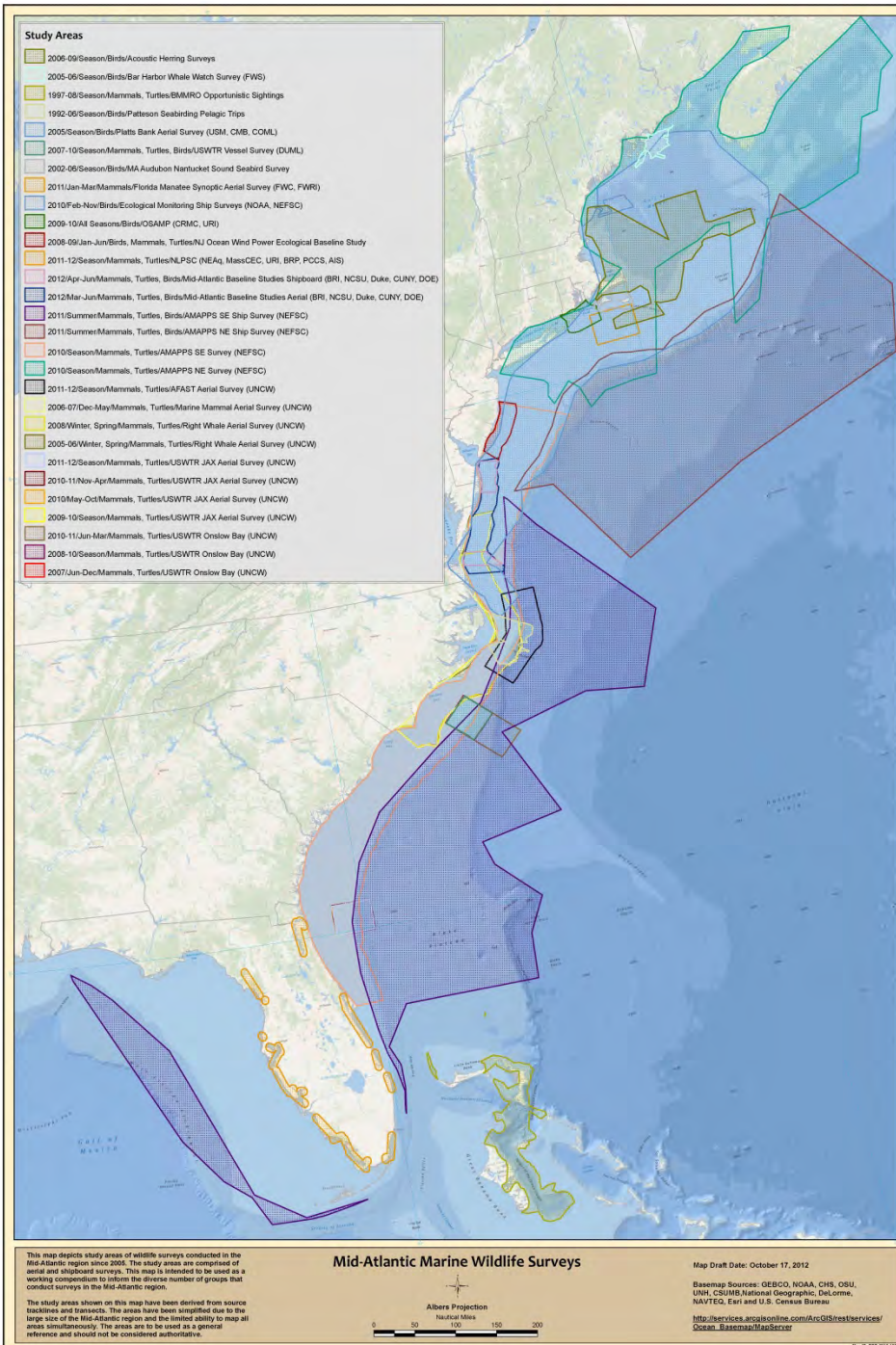


Process for Commercial Lease Issuance (30 CFR 585)



Collecting baseline information about the distribution of species.

- Marine Mammals/Sea Turtles
- Birds
- Fish



Surveys Since 2005

Aerial and Boat Surveys

**Birds
Marine Mammals
Sea Turtles**

Variable Densities

Variable Techniques

Available on Marine Cadastre

Collecting baseline information about:

- Tourism and Recreation*
- Historical Properties*
- Archaeological Sites*

* - Completed studies

- What are the positive effects from development?
- What are the impact producing activities?
- How can we best measure these effects?
- What effects will wind turbines have on the local environment?

- Developing Protocols for Reconstructing Submerged Paleocultural Landscapes and Identifying Ancient Native American Archaeological Sites in Submerged Environments
- Southern New England Cooperative Ventless Trap Survey